

**Procedure:**

- 1) Secure machine against rolling
- 2) Disassemble right rear wheel
- 3) Support right rear wheel motor with a rack, so that the rear axle is parallel to the ground surface
- 4) Remove the wheel house liners to free the area of the sensor
- 5) **Abbildung 1: (if not already assembled)**  
Assemble support (90846783) with 2x hex screw M8x20 (11038213 and 2x detent edge washer SKS-8 (12520029) at frame  
Mount (not fixed) the proximity switch (97090138) with enough distance to the sensor plate at the rear axle
- 6) **Abbildung 2: (if not already assembled)**  
Connect plug of proximity switch with wiring harness W1 at the center console of the machine
- 7) Get axle load with suitable weight to 2.400kg (approx. 1000l water in hopper)
- 8) Put ignition ON to support proximity switch with power  
(In case of retrofitting it's needed to activate the axle load limiter function with the Hako diagnose tool in the machine configuration)
- 9) **Abbildung 3:**  
The inductive proximity switch is a PNP closer switch and is activated as long as the axle is in the allowed stroke area and with this the plate in front of the sensor. The activated status is shown by a lighted LED at the end of the sensor
- 10) **Abbildung 4: Adjustment**  
Straighten the face side of the sensors to the lower edge of the plate at the rear axle so, that the LED light disappear
- 11) **Abbildung 5:**  
Adjust distance of the proximity switch to the plate to 3.5mm +/- 1 and tighten the counter nut.
- 12) **Abbildung 6:**  
Secure the proximity switch on both sides with locking varnish (28984011) atop thread, nut and support.
- 13) Remove the load and reassemble the machine

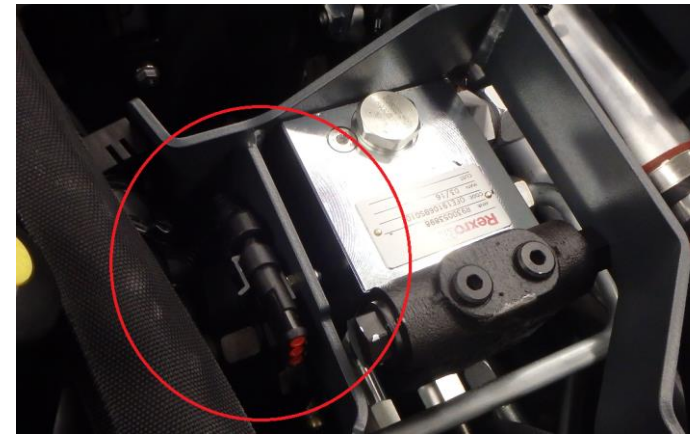


Abbildung 2

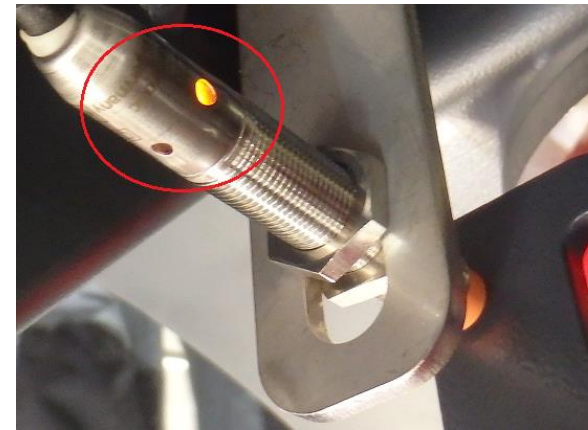


Abbildung 3

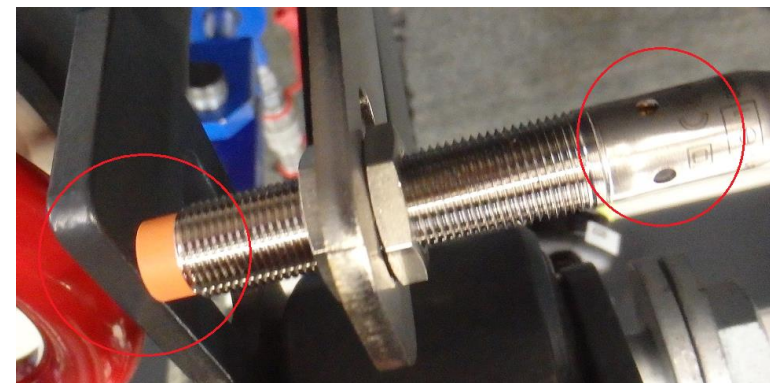


Abbildung 4

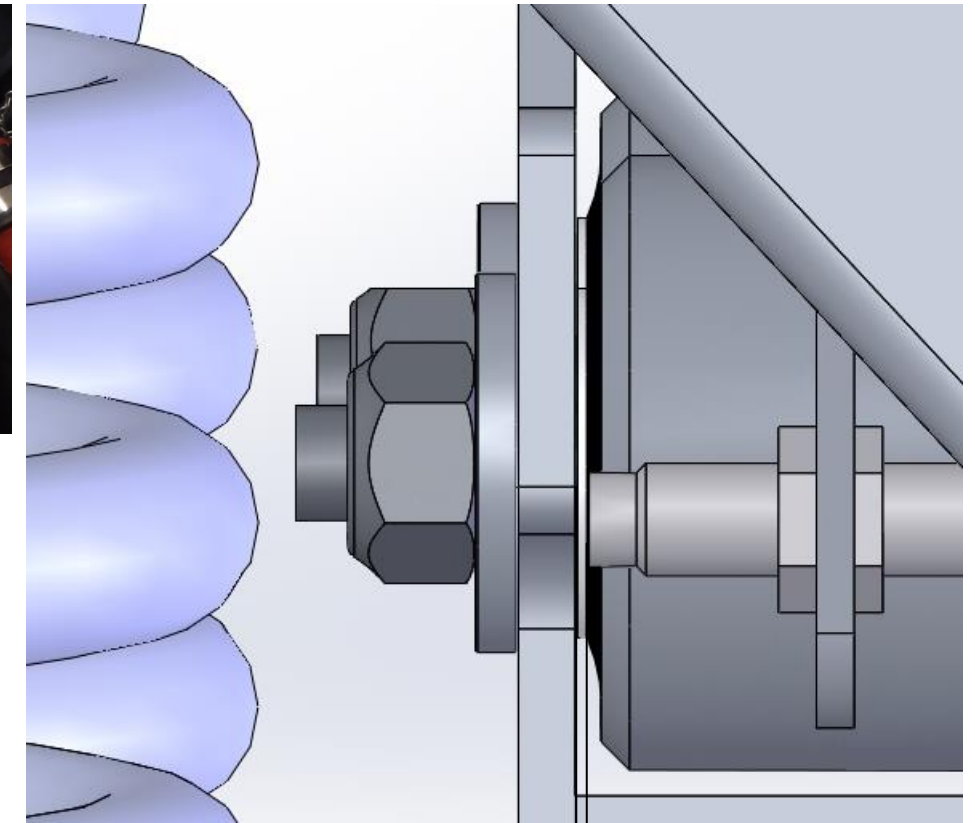


Abbildung 5

3mm ± 0.5 Check size between proximity switch / sensor plat after assembly



Abbildung 6

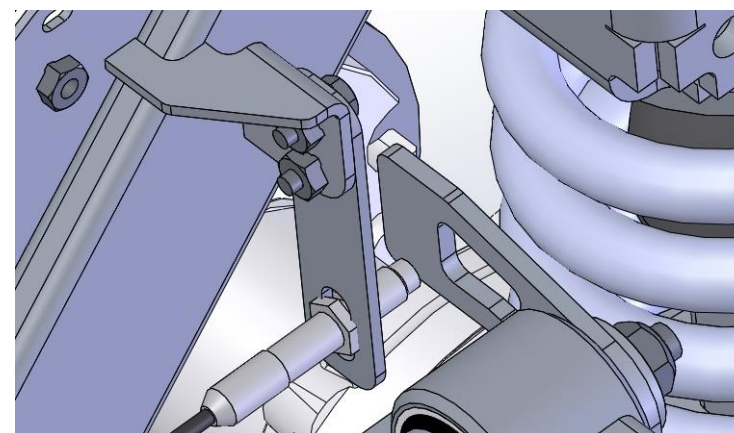


Abbildung 1

		5					Konstr. Freigabe:
		4					
		3					
		2					
		1					
Paßmaß	Abmaße	Nr.	Eingeführt lt.	9210-00	04.03.16	SK/CJ	<b>Hako</b> Hako GmbH 23840 Bad Oldesloe
			Zahl kommt vor	Änd.-Nr.	Datum	Name	Typ 1491
2016	Datum	Name	Hergestellt aus		Maße ohne Toleranzangabe		<input type="checkbox"/> Diese Maße werden vom Empfänger besonders geprüft Ersatz für:
Gezeichnet	23.02.	CJ					
Geprüft							
Normgeprüft			Werkstoff				Zeichnungs-Nr.:
Maßstab	Benennung						Änderungs-Nr.:
	<b>Adjustment of axle load limiter CM1600</b>						<b>91705244</b>
Weitergabe sowie Vervielfältigung dieses Dokuments, Verwertung und Mitteilung seines Inhalts sind verboten, soweit nicht ausdrücklich gestattet. Zuwiderhandlungen verpflichten zu Schadenersatz. Alle Rechte für den Fall der Patent-, Gebrauchsmuster- oder Geschmacksustereintragung vorbehalten.							Blattzahl: 1
							Blatt: 1